

## FRYER CONTROL - CONFORM F

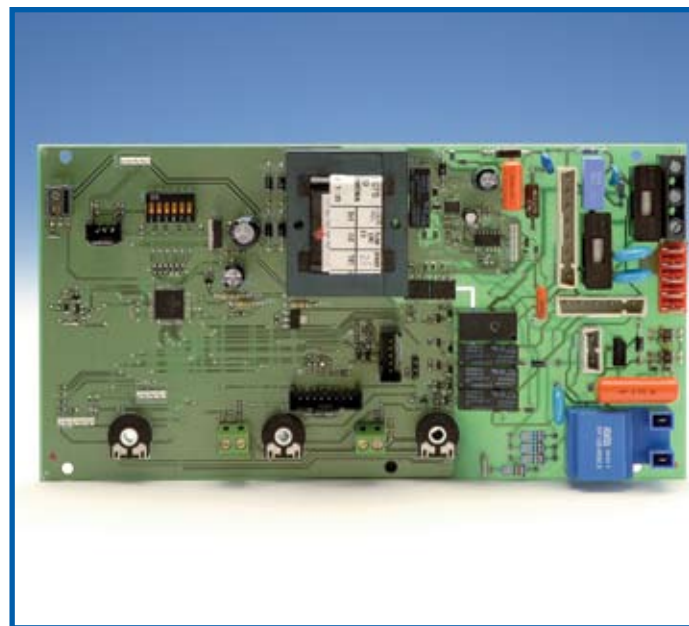
The Conform F platform is tailored to suit the new progression to high efficiency premix applications in the commercial catering fryer market.

Extensive use of modular hardware and software building blocks allows a bespoke solution tailored to specific customer requirements. PCB size, connector options and a pick list of feature options can all be specified by the customer and developed into a customer solution by our development team.

The Conform F is normally a 2 board solution with ignition and fan control hardware mounted close to the burner and a separate display board containing all the software features required for the appliance and user interface.

## FEATURES

- Digital full sequence ignition control conforming to latest version of EN298. Choice of integrated high strength ignition coil for premix burner ignition, hot surface ignition circuit or external ignitor. All timings including repeat ignition attempts are available.
- Modulating DC fan speed control (suitable for most industry standard dc fans with tacho feedback). 24V fan or mains voltage dc options available.
- Thermistor temperature inputs with a choice of thermistors suited to fryer applications.
- Heat Demand is achieved using fuzzy logic software control developed by Pactrol for fast response to changes in oil temperature due to varying demands on the appliance.
- Adjustable start rate, maximum rate, overrun and modulation rate to suit different cooking cycle times.
- Action alarms – audible and/or led's
- Basket lift feature
- Filtration interlock
- Boil Mode
- Melt cycle
- Drain Function
- Diagnostics via display or through a usb connection to a pcb where fault history can be displayed.
- Instant on and Ready message display



# SPECIFICATION (STANDARD CONTROL)

## Inputs:

- Demand input
- Lockout reset input
- Thermistor input
- Flame Probe
- Potentiometers for rate adjustment (if required)

## Other:

- Dual or triple probe operation
- Optional USB diagnostics interface

## Outputs:

- Fan driver
- Gas valve
- Spark output (single, double, triple, HSI or external)
- Display connection
- Lockout indicator
- Burner on indicator
- Basket lift
- Filtration
- Oil Drain switch
- Overheat thermostat
- USB connection

Pactrol Controls Limited reserve the right to change the specification of this product range without notice.

## USER INTERFACE (OPTION)



## USB INTERFACE (OPTION)



## MAIN PCB



**EMERSON**<sup>™</sup>  
Climate Technologies

**PACTROL**  
CONTROLS

Pactrol Controls Limited Unit 3, Three Sisters Enterprise Park, Antler Court,  
Ashton-in-Makerfield, Wigan WN4 8DU, UK  
Tel: +44 (0) 1942 529250 Fax: +44 (0) 1942 529251 Email: [sales@pactrol.com](mailto:sales@pactrol.com) [www.pactrol.com](http://www.pactrol.com)